

The logo for MK MACHINING is centered in the upper half of the image. It features the letters 'MK' in a large, bold, italicized sans-serif font. A thick, black diagonal bar cuts through the 'K' and extends to the right, where the word 'MACHINING' is written in a smaller, bold, italicized sans-serif font. The entire logo is black and stands out against the lighter, hazy mountain background.

# **MK MACHINING**

CATALOG 2024



# Index

## Optics Accessories

Scope Cap	4
ARD	4
Levers	5
Polymer Scope Level	5
Polymer Rail Mounted Level	6
Parallax Wheel	6
Turret Magnifier	7
Tripod Mount	7
Dope Card Holder	8

## Grips

### Adaptive Precision Grip

- Grip Texture Panels	11
- Palm Swells	11
- Basic Thumb Rest Pack	12
- APG Fin	12
- Precision Finger Placer	13

### Vertical Crossover Grip Line (VCG)

- Precision VCG	13
- Beavertail VCG (VCG-L)	14
- RECCE VCG	14
- Storage FloorPlate (SFP)	15

### Ultralight Compact Grip Line (ULCG)

- ULCG	15
- Utility ULCG	16
Improved J Allen Grip	17
Desert Tech Thumb Rest	17

## Single Shot Sleds, Safety Magazines, Magazine Extensions

Single Shot Sleds	18
Safety Magazines	18
Magazine Extensions	19

## Reloading Accessories

RCBS Chargemaster Antistatic Outserts	20
RCBS Matchmaster Antistatic Outserts	20
RCBS Chargemaster Pan	21
Improved Autotricker Pan	21

## Billet Levers & Levels

XLP Scope Level	22
XLP Rail Mounted Level	23
Throw Lever	23

## Chronograph Accessories

Magnetospeed Mount	24
Magnetospeed Mount 12" Rod	24
Labradar Sight	25
Labradar Picatinny Rail Sight	25

## MISC

Sling Swivels	26
T-Post Target Mount	26

## Bullpup Chassis

Bullpup Chassis	28
-----------------	----

## MK Machining

Biography	31
Additive Services	32
Our Service	33
3D Scanning & Reverse Engineering	33

## DRIVEN ARMS CO

Cable Management Panel (CMP)	36
ShortStop	37
Shadow Crossover Grip (SCG)	37

## MK Machining Coming Soon

Garmin Xero C1 Mount	38
SCAR and AK Grips	38

# Optics Accessories

## Scope Cap



### Scope Cap

Scope Cap Sets are printed from a Nylon 11 material using an HP MJF 5210 Pro 3D Printer. Nylon 11 (PA11) is slightly flexible to fit over your scope objective and ocular lens without becoming brittle, along with increased strength to battle wear and tear. Our scope caps are sized down to .000 for a precise fit, mitigating "one size fits most". MKM caps feature a custom made spring granting the ability for full range opening and closing of the cap without unnecessary noise. Only a single bolt is needed to tighten the caps around the objective and ocular lenses. Compatible with MK Machining ARDs.

#### Color



Black



FDE (Flat Dark Earth)



Grey



ODG (Olive Drab Green)

## ARD



### ARD

ARDs are printed from a Nylon 11 (PA11) material using an HP MJF 5210 Pro 3D Printer. PA11 provides enough flexibility to fit over your scope objective without becoming brittle and is strong enough to handle wear and tear. Our scope ARDs are sized down to .000 for a precise fit, mitigating "one size fits most". The slightly larger honeycomb design integrated in the MKM ARD stands out from competitors in that it allows more light in, while effectively minimizing glare. Installation only requires a singular bolt and about a minute of your time! Compatible with MK Machining Scope Cap sets.

#### Color



Black



FDE (Flat Dark Earth)



Grey



ODG (Olive Drab Green)



## Levers



Multiple models, refer to website  
[www.mtmachining.com](http://www.mtmachining.com)

### Color



Black



FDE (Flat Dark Earth)



Grey



ODG (Olive Drab Green)

## Levers

Upgrade your optic with one of our Pro Series Throw Levers! Speed up magnification changes and target engagements without breaking the bank. You'll find throw levers are particularly useful in a variety of situations such as frigid weather conditions and precision shooting competitions. Our Pro Series Throw Levers are printed using our HP MJF 5210 Pro printers, giving the levers a surface finish and the strength of an injection molded part. Our levers are proudly printed in the USA from durable PA11 material, and feature a metal thread insert for increased strength when tightening. It's important to note the properties found in PA11 can protect your optic amidst situations that can result in a snag, such as hunting. The durability of PA11 gives the lever improved flexibility, which allows the lever to yield rather than damaging or marking your optic, unlike what you may find with metallic levers. All our levers come with a lifetime warranty!

## Polymer Scope Level



Multiple models, refer to website  
[www.mtmachining.com](http://www.mtmachining.com)

### Color



Black



FDE (Flat Dark Earth)



ODG (Olive Drab Green)

## Polymer Scope Level

Use our economical Polymer Scope Levels to ensure your reticle isn't canted when shooting long range. Just a few degrees of cant will cause considerable shot dispersion at longer ranges! If the scope is canted by only 2½ degrees, the bullet will impact .05 mils for every 100 meters in the direction of the cant. This means with only a 2½ degree cant and shot of 1000 meters would be an impact of .5 mils. A small change can make a big difference and our Polymer Scope Levels are an economic way to solve this issue. Levels are proudly printed from PA11 on our HP MJF 5210 Pro 3D printer. Expect the highest quality!

# Optics Accessories

## Polymer Rail Mounted Level



### Polymer Rail Mounted Level

Use our economical polymer rail mounted levels to ensure your rifle isn't canted when shooting long range. Just a few degrees of cant will cause considerable shot dispersion at longer ranges! If the scope is canted by only  $2\frac{1}{2}$  degrees, the bullet will impact .05 mils for every 100 meters in the direction of the cant. This means with only a  $2\frac{1}{2}$  degree cant and shot of 1000 meters would be an impact of .5 mils. A small change can make a big difference and our polymer rail mounted levels are an economic way to solve this issue. Proudly printed from PA11 on our MJF 5200 3D printer, the best in the world.

#### Color



Black



FDE (Flat Dark Earth)



ODG (Olive Drab Green)

## Parallax Wheels



### Parallax Wheels

Upgrade your optic with one of our Pro Series Parallax Adjustment Wheels, speeding up parallax adjustment without breaking the bank. Enjoy our comfortable, ergonomic design that gives the user the ability for quick parallax adjustments in any and all settings. No need to worry about reduced sensitivity due to gloves anymore! Our parallax wheels are proudly printed in the USA out of a strong, durable PA11 material on our state of the art HP MJF 5210 Pro 3D printers. They feature a metal thread insert for increased strength when tightening, and are installed in a minute or less. All parallax wheels come with a lifetime warranty!

#### Color



Black



Grey

## Turret Magnifier



Color



Black

## Turret Magnifier

The MK Machining Gen II Pro Series Turret Magnifier is the perfect accessory to provide clear viewing of your turrets in a variety of conditions. We strive ourselves in providing continuous improvement, resulting in our Gen II design that has increased magnification due to our improved lens. It easily mounts to your scope tube and now provides a varying amount of magnification, depending on proximity to the turrets. Pro Series products are made from PA11 on our HP MJF 5210 3D printer, resulting in a durable part with exceptional surface appearance.

## Tripod Mount



Color



Black



Grey

## Tripod Mount

The Rangefinder Tripod Mount allows you to mount your Rangefinder to a standard tripod mount socket or ARCA Swiss. The MKM Mount is designed for a precise fit that will keep your rangefinder secure, allowing for ultra stable ranging. The Rangefinder Tripod Mount is printed from PA12 for superior strength and durability, and at half the cost of comparable aluminum models.

Available for the following rangefinders:

- Athlon Midas 1 Mile
- Bushnell Nitro 1800
- Kahles Helia RF-M 7×25
- Leica Rangemaster 2000-B
- Leupold RX-950
- Leupold RX-1400i
- Leupold RX-1600i
- Leupold RX-2800
- Nikon Black 4K
- Sig Kilo
- Sig Kilo 1200
- Sig Kilo 1400 BDX
- Sig Kilo 1600
- Sig Kilo 2000 Shadow
- Sig Kilo 5K
- Vortex Crossfire HD 1400
- Vortex Razor HD 4000

# Optics Accessories

## Dope Card Holder



Color



Black

## Dope Card Holder

Looking for an economical and ergonomic way to hold your Dope? Look no further than our Gen II Dope Card Holder. Printed from PA11 on our HP MJF 5210 Pro printers, the Dope Card Holders lack mold lines while simultaneously displaying our exceptional Pro Series finish. Our Dope holder features a detent design that lets your data card to move in 45° intervals, and, depending on the situation, allows a number of different viewing angles. Only needing approximately .25" clearance for function, the holder quickly attaches to any picatinny rail. Once finished, simply remove Dope Card Holder and fold it up for easy storage. Included is a powder coated steel data card, held in place by magnets on the back of the Dope Card Holder section. The magnets provide stability, keeping your DOPE in place for demanding situations like backcountry hunting and competitions. Interested in a Billet version? Keep an eye out for an upcoming Billet model.





# Grips

## Adaptive Precision Grip (APG)

Right-handed,  
Left-handed



Adaptive  
Precision  
Grip Chassis

### Color



Black



FDE (Flat Dark Earth)



Grey



ODG (Olive Drab Green)

### Adaptive Precision Grip (APG)

MK Machining is pleased to offer our Adaptive Precision Grip! This grip was made with both bolt-gunners and gas-gunners in mind, combining a more comfortable vertical angle with a grip profile that is not nearly as bulky as a pure "precision" oriented option. Maximum grip width, with identical panels installed on each side, listed below: - small 1.44" wide - medium 1.58" wide - large 1.75" wide Vertical angle grips are growing in popularity for their ergonomic shape, particularly in the prone position, and additionally can reduce wrist strain in all orientations.

Our design assists in putting your trigger finger in a more optimal placement and allows more time behind your gun without added discomfort. While many vertical grips are bulky and intended solely as a place to rest your hand, rather than providing control, our Adaptive Precision Grip gives the user both. We offer the choice of one texture pack (4 panels) included with the purchase of a grip. Additional texture packs are sold separately, along with thumb rests. See descriptions for details of these additional accessories.



## Grip Texture Panels

Right-handed,  
Left-handed



Diamond texture  
grip panels



Plus texture  
grip panels



Smooth texture  
grip panels



Grooved texture  
grip panels



Random texture  
grip panels

Color



Black



Grey

## Grip Texture Panels

Want customization? Want multiple grip textures? Here's your chance! Each texture pack comes with (1) front panel, (1) rear panel, (1) right side panel, and (1) left side panel to transform your existing grip. Panels are easily removable with a flathead screwdriver and press into the chassis for a simple snap fit. In order of ascending texture aggressiveness there are Smooth, Random, Grooved, Plus, and Diamond textures available. The Grooved pattern is unique in being aggressive in the vertical plane, but smooth in horizontal movement. This helps lock your hand from sliding up/down, while allowing side to side positioning.

## Palm Swells

Right-handed,  
Left-handed



Color



Black



Grey

## Palm Swells

Customize your Adaptive Precision Grip to your ergonomic preferences by choosing one of the three offered textures. We offer Smooth, Random, and Diamond textures, and are shipped as a package of six palm swell panels (small, medium, and large swells). With our modular design you can interchange swell sizes as you so desire, let your imagination run wild... or let your hand tell you what it wants. Our palm swells function with both a left or right handed grip chassis.

# Grips

## Basic Thumb Rest Pack



### Basic Thumb Rest Pack

Popular in the precision rifle world, thumb rests allow an enhanced position for your trigger finger and control of your rifle. Our thumb rests slide effortlessly into the t-slot found on our adaptive precision grips. After extensive internal testing, we determined our top 3 favorite rests and included them in this pack. We will continue expanding this selection of thumb rests driven by customer requests.

Color



Black



Grey

## APG Fin

Right-handed, Left-handed



### APG Fin

Converts your Adaptive Precision Grip to "Featureless" Compliance. Snap fit with two additional locking fingers to keep your fin in place, and your grip legal! Additionally, all other Adaptive Precision Grip accessories function with the Fin. Explore options by adding Palm Swells and Thumb Rests for greater control than other featureless grips. The APG is available in both right and left handed versions. Consider using with our "Precision Finger Placer" and an aggressive texture such as the Diamond Pattern with Palm Swells for more hand purchase area than your standard "Featureless Grip".

Color



Black



Grey

## Precision Finger Placer



Color



Black



Grey

### Precision Finger Placer

Improve your accuracy during shooting sessions by utilizing our Precision Finger Placer. Our Precision Finger Placer places your thumb and pointer finger in optimal angles to obtain maximum precision. Simply slide the product into the t-slot on our Adaptive Precision Grip. Funny name, serious ergonomics!

## Precision VCG

Right-handed, Left-handed



Color



Black



FDE (Flat Dark Earth)



Grey



ODG (Olive Drab Green)

### Precision VCG

The Precision Vertical Crossover Grip (VCG), developed in conjunction with Driven Arms Co, provides users an ideal ergonomic feature set for a variety of applications. The Precision model features a thumb rest and finger-placer, distinguishing it from the RECCE model, and includes a near vertical, 5 degree front strap with a tapered lower ledge, as well as an optimized rear profile. These attributes provide maximum wrist comfort and leverage in a variety of shooting positions. Proprietary anti-slip textures help to further lock your hand in place while also providing channels for sweat and debris to vent or escape. Overall width is increased from standard AR compatible offerings via palm swell sections, contributing more surface area for improved purchase and general comfort. For comparison, the width of the Precision VCG sits at ~1.45" whereas the popular Magpul K2+ is 1.2". Beyond the external features, the Precision VCG also features a unique interior geometry, bringing strength and rigidity to the larger profile without the usual increase in weight that would accompany it. Sans hardware, the Precision model weighs just 2.05oz (58g). The Precision VCG thumb rest may (but not always) interfere with Ambi-Safety selectors on a few firearms. Proudly made in the USA: Additively Manufactured in house from PA11 on our HP MJF 5210 Pro printers. Each unit includes mounting hardware and is supported with a lifetime warranty.

# Grips

## Beavertail VCG (VCG-L)



### Color



Black



FDE (Flat Dark Earth)



Grey



ODG (Olive Drab Green)

## Beavertail VCG (VCG-L)

Joining our Vertical Crossover Grip (VCG) lineup is the VCG-L model. Developed in conjunction with Driven Arms Co, the VCG-L features a beavertail and a bit more girth that you'll love getting your hand on. Moving your hand rearward approximately 0.2" is a small change that makes a big difference for trigger control and comfort. We are confident you will find this, in addition to our other VCG models, to be the most ergonomic solution for your rifle. The VCG-L features a near vertical, 5 degree front strap with a tapered lower ledge, as well as an optimized rear profile. These attributes provide maximum wrist comfort and leverage in a variety of shooting positions. Proprietary anti-slip textures help to further lock your hand in place while also providing channels for sweat and debris to vent or escape. Overall width is increased from standard AR compatible offerings via palm swell sections, contributing more surface area for improved purchase and general comfort. For comparison, the width of the VCG-L sits at ~1.45" whereas the popular Magpul K2+ is 1.2". The VCG-L weighs 2.2oz (62g) with hardware, significantly lighter than any comparable precision-oriented grip. Proudly made in the USA: Additively Manufactured in house from PA12 on our stellar HP MJF 5210 Pro 3D printers. Each unit includes mounting hardware and is supported with a lifetime warranty.

## RECCE VCG



### Color



Black



FDE (Flat Dark Earth)



Grey



ODG (Olive Drab Green)

## RECCE VCG

The RECCE Vertical Crossover Grip (VCG), developed in conjunction with Driven Arms Co, provides users an ideal ergonomic feature set for a variety of applications. The RECCE VCG features a near vertical, 5 degree front strap with tapered lower ledge, as well as an optimized rear profile, providing maximum wrist comfort and leverage in a variety of shooting positions. Proprietary anti-slip textures help to further lock your hand in place while also providing channels for sweat and debris to vent or escape. Overall width is increased from standard AR compatible offerings via Palm Swell sections, contributing more surface area for improved purchase and general comfort. For comparison, the width of the RECCE VCG sits at ~1.45" whereas the popular Magpul K2+ is 1.2" Beyond the external features, the RECCE VCG also features a unique interior geometry, bringing strength and rigidity to the larger profile, without the usual increase in weight that would accompany it. With hardware, the RECCE grip weighs ~2.19oz (62g). Proudly made in the USA: Additively Manufactured in house from PA12 on our HP MJF 5210 Pro printers. Each unit includes mounting hardware and is supported with a lifetime warranty.



## Storage FloorPlate (SFP)



### Storage FloorPlate (SFP)

Introducing the newest acronym on our site: SFP. The SFP, Storage FloorPlate, brings storage capabilities to all grips in our VCG line. The SFP is a single piece design constructed from PA12 on our HP MJF 5210 Pro printers. Tensioning tabs index with the ribbed interior geometry of the grips, locking it firmly in place while also allowing for a smooth quick-pull release for removal.

#### Color



Black



FDE (Flat Dark Earth)



Grey



ODG (Olive Drab Green)

## ULCG



### ULCG

The Ultralight Compact Grip (ULCG), designed in conjunction with Driven Arms Co, provides users an ergonomic and "low-drag" profile at a vastly lower weight than comparable products. Weighing just over 1.06oz (30g) sans hardware, the ULCG features a shallow grip angle of 10.4° for greater comfort and control, particularly with shorter rifle & pistol setups. This is especially useful for those utilizing a compact "CQB" style stance. Greater comfort and control leads to improved accuracy. Unique internal geometry brings surprising strength and rigidity to the ULCG with a minimal amount of material usage. Grips feel pleasantly stiff at this weight and do not flex when squeezed. Additively Manufactured on our HP MJF 5210 Pro printer from PA11 material. PA11 allows for additional elongation to help avoid damage from impacts. Includes mounting hardware. Available in several different colors: Black, Grey, OD Green, and FDE.

#### Color



Black



FDE (Flat Dark Earth)



Grey



ODG (Olive Drab Green)

# Grips

## Utility ULCG



### Color



Black



FDE (Flat Dark Earth)



Grey



ODG (Olive Drab Green)

## Utility ULCG

The Ultralight Utility Compact Grip (ULCG) line, designed in conjunction with Driven Arms Co, provides users an ergonomic and "low-drag" interface point, at a notably low weight: 1.6oz (45g) including hardware. We offer two texture options in our Utility lineup: Random and Diamond. You will also find a secure storage space accessible via a removal/interchangeable floorplate. Optimized for compact applications, the Utility ULCG features a shallow grip angle of 10.4° for greater comfort and promotion of a more natural + sustainable grip. This, mixed with the proprietary texture options and anti-slip ledge on the bottom, ensures the end user consistent and reliable control. Unique internal geometry brings surprising strength and rigidity to the Utility ULCG with a minimal amount of material usage. Made in the USA: Additively Manufactured by MKMachining on their HP MJF 5210 Pro printer, from PA11 material. Each unit includes mounting hardware and is supported with a lifetime warranty.

### Spoiler:

**Gen II design expected in 2024!**

## Improved J Allen Grip



Color



Black

## Improved J Allen Grip

Get better ergonomics on your J Allen Chassis with our "almost vertical" grip. Designed with input from J Allen users, this chassis has a very shallow angle with palm swells and a t-slot for optional thumb rest placement on either side of the grip. Optional accessories, Palm Rests and Thumb Rests, are included with every purchase of our J Allen Grip. Dress up or down as you choose! The Randomized texture found on the part provides sufficient grip without being extremely aggressive. Action screws are still accessible with grip in place.

## Desert Tech Thumb Rest

Dual, Right-handed,  
Left-handed



Color



Black



Grey

## Desert Tech Thumb Rest

Finally a spot to rest your thumb when using the standard "precision rifle" style grip with your SRS rifle. Available in a right-handed, left-handed, and ambidextrous model. Simply remove a shell bolt and nut, then replace with the thumb rest and its included hardware. Printed on our state of the art HP MJF 5210 Pro printer machine out of durable and lightweight PA11.

# Single Shot Sleds, Safety Magazines, Magazine Extensions

## Single Shot Sleds



Multiple models, refer to website  
[www.mtmachining.com](http://www.mtmachining.com)

### Single Shot Sleds

Easily use your rifle as a single shot with our several single shot sleds! We have models for AICS LA, AISC SA, AR-15, AX50, Desert Tech SRS, Savage SA Model 10, and Tikka CTR. Simply lock the sled in place like a standard magazine, and experience the smooth feeding of a single round. Particularly useful when testing new loads, rounds that are longer than mag length, or any situation where you don't feel like loading a magazine. Printed from PA12 on our HP MJF 5210 Pro printers.

## Safety Magazines



Multiple models, refer to website  
[www.mtmachining.com](http://www.mtmachining.com)

### Safety Magazines

Confirm your rifle has no magazine installed, and cannot fire by locking the bolt back on your rifle with our safety magazines! You'll find we currently have models for AICS LA, AICA SA, AR-15, CZ 455/457, Desert Tech SRS, Savage SA, Tikka CTR, and Vudoo 22. However, this is just the beginning. We have every capability, and expectation, to make models for virtually any rifle! Printed on our HP MJF 5210 Pro printers out of PA12, all safety magazines are cerakoted bright orange to serve as a quick visual indicator. Inserting our safety magazines, you'll find it locks in like a standard magazine, protrusion prevents the bolt from closing. Will only fit into the rifle if the bolt is open.

## Magazine Extensions



### Color



Black



FDE (Flat Dark Earth)



Grey



ODG (Olive Drab Green)

## Magazine Extensions

Want to reduce the number of reloads to give yourself that extra edge? Add extra capacity to your stock magazine with our expertly designed magazine extensions! Don't worry about finding any tools for installation due to our unique geometry either assisted by incredibly accurate 3D scans, or a detent and integral spring. Made from both PA11 and PA12, depending on the model, our magazine extensions are lightweight and incredibly strong. We back up these claims with a lifetime warranty! However, the exact capacity of your magazine will vary, we design our extensions to work with stock spring lengths. In some instances, another follower is included for optimum capacity and function.

We offer a variety of models listed below:

- Bergara B14R CZ 455/457 10rnd +3 CZ 455/457 5rnd +3
- Magpul AICS +3
- Magpul AICS LA +2
- Magpul AICS SA +2 Metal
- AICS LA SA
- AICS/ARC/ACCURATE/MDT +2 SA
- MDT 223 +5 (Gen I) SA
- MDT 308 +4 (Gen I) SA
- MDT 223 +5 (Gen II) SA
- MDT 308 +4 (Gen II)
- RIM X 22LR +3
- RIM X 22LR +7
- Tikka T1x .22LR +4
- Tikka T1x 17HMR +4
- Vudoo Gun Works 22LR +3/+

# Reloading Accessories

## RCBS Chargemaster Antistatic Inserts

Undersized, Standard, Oversized



## RCBS Chargemaster Antistatic Outserts

Stock powder dispensing tubes on automatic powder dispensers can be inaccurate, which could lead to overcharges. To assist these issues, we designed our RCBS Chargemaster Outserts! The MK Machining RCBS Chargemaster/Hornady Auto Charge Antistatic "Outserts" are a simple way to improve the accuracy of your Chargemaster or Hornady Auto Charge. The RCBS Chargemaster Antistatic Outsert is made from PA11 on our HP MJF 5210 Pro printers, providing an exceptional surface finish and durable part. Our improved straw is a press fit onto the stock powder tube, so there is no worry about it removing after repeated use. Our Outserts include several different sizes to ensure correct fitment while accounting for variation in the stock powder tube size. Important to note, we designed the Outserts to work perfectly with our improved Antistatic Chargemaster Pan. This improved straw is a significant upgrade to the stock Chargemaster and won't break the bank. Expect a perfect fit onto the platform of your powder dispenser.

## RCBS MatchMaster Antistatic Outserts



## RCBS MatchMaster Antistatic Outserts

The stock powder dispensing tube on the MatchMaster can be inaccurate, potentially leading to overcharges. The MK Machining RCBS MatchMaster Outserts are a simple and cost effective way to improve the accuracy of your MatchMaster! 6 "Overserts" are sent with a MatchMaster Antistatic Outserts purchase to account for any variation in tube size: 3 individual sizes for each powder drop tube. Due to the close proximity of the two powder tubes, you will only be able to use one at a time. Beta testers preferred one or the other depending on what powder they ran, try both out and determine what works best for your needs! The RCBS MatchMaster Antistatic Outsert is made via additive manufacturing on our HP MJF 5210 Pro printers from PA11, producing an exceptional surface finish and durable part. Our improved straw is a press fit onto the stock powder tube, so there is no worry about it removing after repeated use. Our improved outsert is designed to work perfectly with our improved antistatic chargemaster pan. This improved straw will be a significant upgrade to the stock MatchMaster and won't break the bank. Expect a perfect fit onto the platform of your powder dispenser.



### RCBS Chargemaster Pan



### RCBS Chargemaster Pan

The MK Machining Pro Series Improved RCBS Chargemaster Pan is a simple, improved powder pan for your Chargemaster. Made from PA11 on our HP MJF 5210 Pro printers, our Chargemaster pan provides a durable part to test the wears and tears of time. Our improved pan features a symmetrical design and pouring spouts on either side for consistent left or right handed pouring. Print seam has been designed for no impact powder flow regardless of right or left-handed pour. Our improved pan has been designed to increase powder capacity over the stock powder pan for those large loads. Our design maximized the vertical height of the pans walls, allowing for increased powder capacity and reducing the chance of powder splashing out. You will also find that there is no powder tube interference. We hope you enjoy the superior surface finish provided by our MJF printing capabilities! These pans won't break the bank and fit directly onto the platform of your Chargemaster.

### RCBS Autotricker Pan



### Improved Autotricker Pan

The MK Machining Pro Series Improved Autotricker Pan is an upgraded accessory for your Autotricker setup. We have maximized the vertical height of the powder pan to increase powder capacity and reduce the chance of powder bouncing out upon discharge. Our improved Autotricker Pan also has an extended handle for easier removal from your scale. Designed with symmetrical pouring spouts on either side, both right and left handed users can pour with ease. We also conveniently placed the print seam in the middle of the pan for a smooth pour regardless of which hand is used. Made on our state of the art MJF printers from PA11, we are confident you'll be very impressed by the quality of these prints as they appear injection molded. Expect a cost effective product with a perfect fit on your Autotricker platform!

# Billet Levers & Levels

## XLP Scope Level



## XLP Scope Level

After much thought on what we wanted to achieve with the continual improvement on our popular ULP Levels, our goal was to provide the slimmest, easiest to install, and most sensitive scope level on the market-at a more than reasonable price. The Xtreme Low-Profile (XLP) Levels use the same level vial as our older ULP level, delivering sensitivity to less than a degree, along with responsiveness in extreme cold. As modern riflescope turret housings are getting bigger and beefier, along with similar trends found in rings/mounts, users find there is even less scope tube space for helpful accessories. Thus, it's important to note, the band of our XLP Levels are only 0.300" wide. Once installed, you'll find the vial head as windows on all sides to allow the maximum amount of light for excellent visibility, even in low light situations. Regardless of the windows, the vial head provides superior protection against impacts that could damage the level vial. While designing a smaller, more sensitive level vial than other offerings, we ensured that you can still see the vial with your non-dominant eye from the shooting position on practically every scope. You will also find it doesn't stick out beyond the smaller turrets, preventing snagging or other

damage. With the new hinged band, installation is easier than ever. We don't enjoy zeroing and running a tall target test after each accessory install, so we used a hinge design that requires less than 0.20" of clearance beneath your optic for installation without removal. The level can also be mounted "upside down" to be seen below the scope tube similar to a rail-mounted level if desired. We took the extra step to laser etch the surface with a level indicator for a quicker reference than trying to center between the standard black lines. Made from Aluminum 6061 with Type III anodization, our XLP levels are both milled and assembled here in the USA!

## XLP Rail Mounted Level



### XLP Rail Mounted Level

The MKM Billet XLP Rail Mounted Level is a robust, yet slim and lightweight solution for maintaining accuracy at extended ranges. Our unique design indexes off the flats of your picatinny rail, rather than clamping to the picatinny profile and potentially leading to discrepancies with manufacturing tolerances. Standing proud of the pic rail by significantly less than .1", we expect our XLP level to work with all optics. A highly sensitive, yet small level vial is placed for optimal visibility with your non-dominant eye, and does not stick out further than necessary to prevent snagging. Optionally mount in a left or right-handed position, with lasered torque specs and vial alignment marks on each side. Weighs just over 0.5oz (14.2g) and is made from 6061 Aluminum with a Type III anodization. Why do I need a Billet Rail Mounted Level? Just a few degrees of cant will cause considerable shot dispersion at longer ranges! If the scope is canted by only 2½ degrees, the bullet will impact .05 mils for every 100 meters in the direction of the cant. This means with only a 2½ degree cant and shot of of 1000 meters would be an impact of .5 mils. A small change can make a big difference. The Rail mounted level is the perfect solution for your gas gun.

## Throw Lever

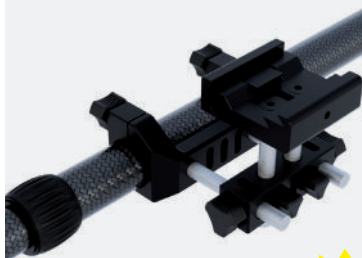


### Throw Lever

Upgrade your optic with one of our aluminum throw levers! Speed up magnification changes and target engagements without breaking the bank. Machined from 6061 Aluminum and given a Type III hardcoat anodization, our lever design provides a precise fit, maximum durability and premium feel! Easily install our lever in a minute or less with a singular bolt and hinge design. This, alongside our smooth chamfered edges, make up an incredibly low profile throw lever option. Take away the hassle of removing your optic to mount! Lifetime warranty included with purchase.

# Chronograph Accessories

## Magnetospeed Mount



NEW

### Magnetospeed Mount

We've made substantial improvements to our very popular Magnetospeed Mount for better performance with long barrels and suppressors. Beefier construction, larger hardware, and a 5/8" rod rather than 3/8" provide a sturdier experience, particularly with the bayonet set further from the mount. Unique 3-piece clamp works with both ARCA & Picatinny rails, needing just one slot for installation and 2" of rail space. Two-way adjustment via four stainless steel adjustment rods should provide adequate movement of the bayonet for nearly all rifles. There is NO CANT adjustment of the bayonet, meaning if you have an angled forend or a rail that is not parallel with your barrel, this mount will not work for your rifle. We also can provide an adaptor for your magnetospeed sporter model. Fully CNC machined 6061 aluminum and stainless-steel construction. Type III Hardcoat Anodization. Magneto Mount Gen IV coming in 2024, featuring tool-free adjustment and attachment, with a carbon fiber telescoping rod.

## Magnetospeed Mount 12" Rod

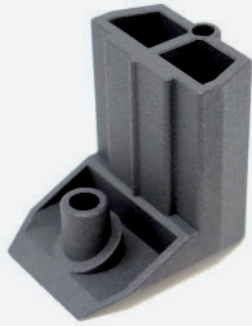


NEW

### Magnetospeed Mount 12" Rod

MK Machining Gen III Magnetospeed Mount 12" Rod Includes 1 12" Rod and 1 set screw for connecting two 12" Rods. \*Only Works for our GEN III Mount.

## Labrador Sight



### Labrador Sight

Many users find the “aiming groove” on the Labrador to be less than precise. Hearing and experiencing these concerns, we set out to improve accuracy by creating our Pro Series Improved Labrador Sight! Simply remove the bolt just below the groove, slide the sight into place, and install the included longer bolt for a semi-permanent installation. Compare this to similar Labrador sighting options and you will find our quality to be superior, guaranteed. Printed on our state of the art HP MJF 5210 Pro printer out of durable PA11 material. Ultra lightweight, and will withstand more abuse than your chronograph!

Color



Black

## Labrador Picatinny Rail Sight



### Labrador Picatinny Rail Sight

Want the convenience of adding a red dot to your Labrador? MK Machining provides our ever-popular Labrador sight design with a picatinny rail integrated for all your accessory dreams! Take less than a minute of your time to attach and enjoy!

Color



Black

# MISC

## Sling Swivels



## Sling Swivels

A premium, USA-made QD Swivel set without a premium price! Internal size of the swivel is approximately 1.35"x.5". Fits in your flush cup for positive sling retention and quick sling detaching. We stock a number of different sizes and shapes of QD swivel sets including: - Heavy Duty Little D QD swivel set which can be found here - Heavy Duty Big D QD swivel set which can be found here - Heavy Duty 1" Oval QD swivel set which can be found here - Heavy Duty 1.5" Oval QD swivel set.

## T-Post Target Mount



## T-Post Target Mount

Lightweight and simple to use, our Gen II T-Post Mount now features a wrench cutout for 1/2-13 bolts and a one-piece design. Hang targets via a single spring-loaded carriage bolt for enhanced audibility and target ring. Our T-Post Target Mount clamps onto a standard T-post for a durable and extremely economical option on your range. All hardware is certified Grade 8, including the carriage bolt. Targets are hung at approximately a 15 degree angle to direct bullet splatter down, and held under spring tension for a more audible and forgiving impact compared to solid mounted targets. The new Gen II Mount allows all the features of our "Enhanced T-Post Mount" at a lower cost. Add the T-Post Mount Adapter for use with larger, multiple bolt targets. Hang a T-Post Protector off the mount for a long-lasting setup. A 4" target will protect the front of the Gen II T-Post Mount. These mounts come uncoated so the consumer can choose whatever coating type and color they want for long term storage and use





# Bullpup Chassis

## Bullpup Chassis

The newest iteration of our bullpup chassis, the MK2.6, will be released in Spring 2024. Differences from the MK2.5 are slight, but significant, and not all components are backwards compatible. There has been further optimization to the linkage assembly, and several ounces of weight reduction, bringing chassis weight of the MK2.6 to roughly 4lbs. A lug has been added to the scope hood, to further aid maintaining optic zero.

MK2.6 Bullpup Chassis ship with a custom Timney Calvin Elite Trigger set to roughly 12oz, & a 20moa Scope Rail integrated into the scope hood. Only a barreled action is needed to be supplied to create a functional rifle with the MK2.6 Bullpup Chassis.

New for 2024, the MK2.6 Bullpup Chassis features compatibility with both short & long Remington 700s, aftermarket actions with 700 footprints, AND Tikka T3 short and long actions. Right or left-handed actions are interchangeable with our chassis, requiring no modifications. If a user is planning on an OEM Remington 700 in left hand, a different safety plate is required.

While bullpups typically have poor ergonomics or triggers, the MK2.6 Bullpup Chassis features length of pull adjustment and an extensively adjustable trigger linkage system to provide a crisp trigger at your desired weight. The safety is also relocated to the front of the trigger guard/barricade stop. AICS magazines are used with the MK2.6, and in long action configuration both standard and CIP magazines are accepted with a small snap-fit polymer filler plate that is easily installed or removed.

Standard AR grips are compatible with the MK2.6 chassis, although we provide our own in-house manufactured vertical grip that is a perfect fit to the chassis and provides the maximum amount of room between magazine and grip.

MLOK Slots, Flush Cups, 10-32 threaded mounting points, and an Arca rail are all integrated into the chassis providing an assortment of attachment points for accessories. The forend interior width is just over 1.6" and can accommodate many suppressors for SBR use.

Recoil lug slot is oversized to allow use with large recoil lugs, or even more exotic options like the Switchlug.







**MLKFM**

**Founded in 2015, MK Machining set out with the goal of delivering innovative products to the precision shooting community at an incredible value.**

**All of our products are manufactured using cutting edge technology and materials right here in the USA.**

# Additive Services



**MK Machining** is a small, quality-oriented business where we place our customer relationships above all else. We have the capabilities of larger service bureaus, but with a more personable and customer-focused mindset. Rather than simply trying to maximize machine output, we prefer to produce parts in a way that maximizes customer satisfaction. We keep the customer's requests at the forefront, from mechanical quality to aesthetics, throughout the entire production process. We set ourselves apart from larger service bureaus by offering design for additive manufacturing (DFAM) consulting services. Rapid advances in additive manufacturing have made part quantities, geometries, and materials that were not possible a few years ago, now feasible.





# Our Services



## RAPID PROTOTYPING

Have prototypes that you need rapidly turned around? We can help with as little as one business day lead times.



## PRODUCTION PARTS

Whether a production batch is hundreds of parts or thousands of parts we can assist. We pride ourselves on part consistency, expect the first and last batch to be the exact same!

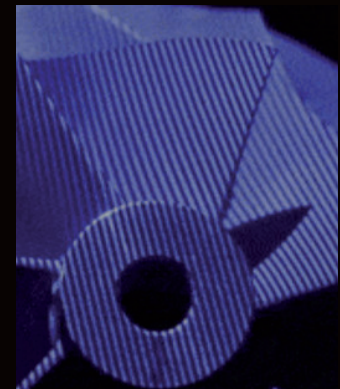
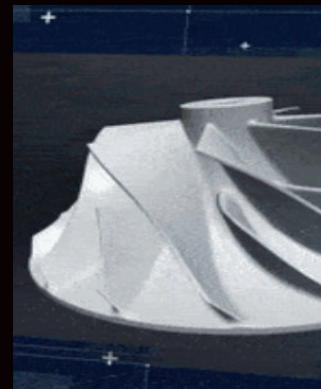


## DESIGN FOR ADDITIVE MANUFACTURING

Design for Additive Manufacturing allows us to assist customers with taking parts designed with traditional manufacturing in mind and refine them for additive manufacturing. This can result in parts that are significantly cheaper to produce with similar mechanical properties.

# 3D Scanning & Reverse Engineering

3D Scanning and reverse engineering allow us to turn difficult to model parts into a 3D CAD model. This service is perfect for replicating older parts that no longer have models or drawings.







[WWW.DRIVENARMSCO.COM](http://WWW.DRIVENARMSCO.COM)

# DRIVEN ARMS CO

## Cable Management Panel (CMP)

Ridged texture, Sidewinder texture



Color



Black

### Cable Management Panel (CMP)

Protect and organize wires, cables, even nylon/ shock cord, while also adding the functional grip of a rail cover. The open cavity design allows for almost endless options for configuration, while also acting as an insulatory buffer for heat, saving electronics AND your skin. The directional textures lock your hand in when applying rearward pressure for recoil control, while also allowing your hand to slide back into position unimpeded following reloads, or to reach pressure switches or activate laser aiming devices, and for malfunction clearing, or other weapon manipulations.

Quantity	1 Pack, 2 Pack, 3 Pack
Texture	Ridged, Sidewinder
Material	Nylon Polymer
Weight w/Hardware	0.39 oz (11G)/Panel, Covers 2 MLOK Slots
Torque	- 2 in/lbs - Do not over-torque
Dimensions	Covers Two MLOK Slots: L - 3.13 in. (79.5mm) W - .655 in. (16.64mm) H - .258 in. (6.55mm) off of rail
Hardware Included	Per Panel: 2 x Magpul MLOK T-Nuts 2 x T25 Torx Flat Head Screws





## ShortStop



### ShortStop

The ShortStop is a next gen hybrid handstop, combining the same low drag, no snag profile of traditional handstops with the increased frontal surface area typically only available in larger foregrips. End users benefit from a unique blend of comfort and control, in a lightweight, compact, and highly durable package. The directional front texture is an industry first, locking your hand in when applying rearward or downward pressure for recoil control, while also allowing your hand to slide back into position unimpeded following reloads, or to reach pressure switches or activate laser aiming devices, and for malfunction clearing, or other weapon manipulations.

#### Color



Black



FDE (Flat Dark Earth)



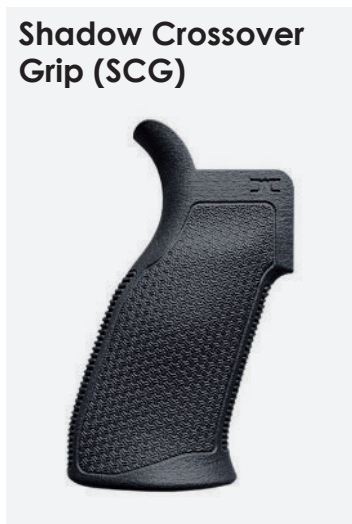
Grey



ODG (Olive Drab Green)

Material	Nylon Polymer
Weight w/ Hardware	0.49 oz (14G)
Torque	- 10 in/lbs - Do not over-torque
Dimensions	L - 1.969 in. (50mm) W - 1.154 in. (29.31mm) H - 1.367 in. (34.72mm) off of rail
Hardware Included	1 x Magpul MLOK T-Nut 1 x 10-24 Hex Screw

## Shadow Crossover Grip (SCG)



### Shadow Crossover Grip (SCG)

Enjoy the combined efforts of MK Machining and Driven Arms Co results in an ergonomically improved grip. The SCG adapts the ergonomic package of Driven Arms Co's CZ Adapter with palm swells into a roughly 2.3oz professionally printed product. With a 16 degree grip angle, 1.445" maximum width, and tapered profile, you'll find increased long-operating comfort and control. Currently offered in the minimally abrasive Apex texture, and more aggressive Atom texture. Printed from PA12 on our state of the art HP MJF 5210 Pro machines, expect quality functionality and aesthetics.

#### Color



Black



FDE (Flat Dark Earth)



ODG (Olive Drab Green)

# MK Machining Coming Soon

## Garmin Xero C1 Mount

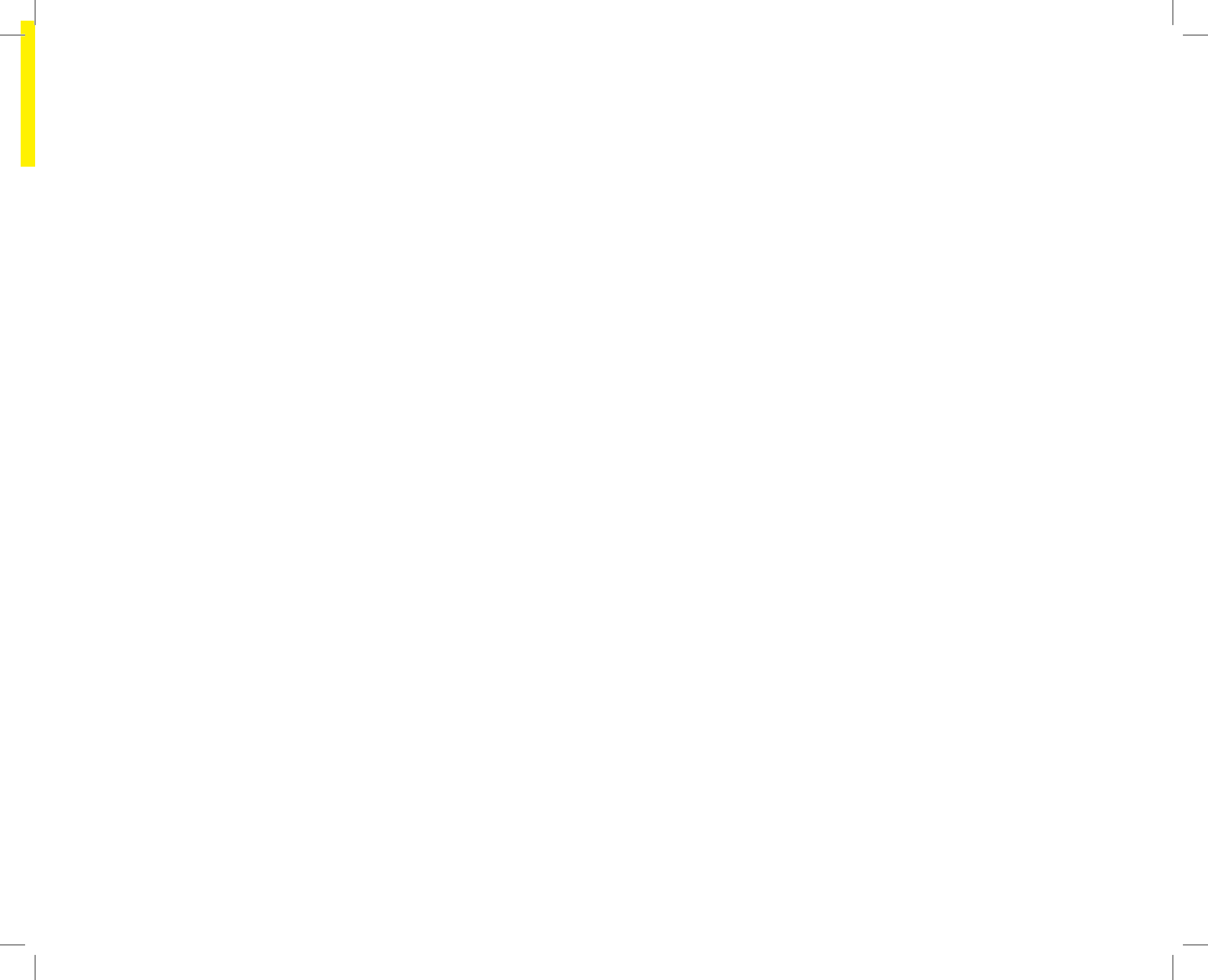
Keep your sights set in 2024! Coming soon is the new MK Machining Garmin Xero C1 Mount. Made in the USA with the highest quality materials, our mounting system allows the Xero to be mounted via ARCA, Picatinny, Key-MOD, and MLOK. Stay tuned for upcoming details... and potentially more Garmin accessories.

## SCAR and AK Grips



## SCAR and AK Grips

Dedicated SCAR and AK grips entering the scene in 2024! Make sure to keep your eyes peeled for updates!







PH. 5732069335  
208 Elizabeth St - Hallsville, MO 65255

[support@mkmachining.com](mailto:support@mkmachining.com)  
[www.mkmachining.com](http://www.mkmachining.com)